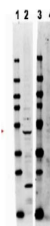


## Product Datasheet

### TRAF2 (RABBIT) Antibody GRP3664

<b>Description</b>	Anti-TRAF2 (RABBIT) Antibody
<b>Species/Host</b>	Rabbit
<b>Reactivity</b>	Human
<b>Conjugation</b>	Unconjugated
<b>Tested Applications</b>	ELISA, IF, WB
<b>Form/Appearance</b>	0.02 M Potassium Phosphate, 0.15 M Sodium Chloride, pH 7.2
<b>Concentration</b>	0.93 mg/mL
<b>Note</b>	For research use only.
<b>Isotype</b>	IgG
<b>Clonality</b>	Polyclonal
<b>Source</b>	This affinity purified antibody was prepared from whole rabbit serum produced by repeated immunizations with a synthetic peptide corresponding to an internal region human TRAF2.
<b>Uniprot ID</b>	<b>Q12933</b>
<b>Entrez</b>	<a href="https://www.ncbi.nlm.nih.gov/gene//7186">https://www.ncbi.nlm.nih.gov/gene//7186</a>
<b>Dilution Range</b>	ELISA: 1:60,000 - 1:250,000, IF Microscopy: user optimized, Western Blot: 1 µg /mL

**Application Notes** Rabbit Anti-TRAF2 Antibody has been testing in ELISA and Western Blot. Positive control HeLa Whole Cell lysate (p/n W09-000-364) expect ~47kDa. Specific conditions for reactivity should be optimized by the end user.



Anti-TRAF2 Antibody -  
Western  
Blot