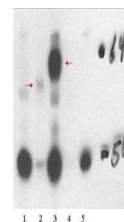


## Product Datasheet

# Thyroid Hormone Receptor $\beta$ 1 (THRB1) (RABBIT) Antibody GRP3637

<b>Description</b>	Anti-Thyroid Hormone Receptor $\beta$ 1 (THRB1) (RABBIT) Antibody
<b>Species/Host</b>	Rabbit
<b>Reactivity</b>	Human, Mouse
<b>Conjugation</b>	Unconjugated
<b>Tested Applications</b>	ELISA, IF, IP, WB
<b>Form/Appearance</b>	0.02 M Potassium Phosphate, 0.15 M Sodium Chloride, pH 7.2
<b>Concentration</b>	1.66 mg/mL
<b>Note</b>	For research use only.
<b>Isotype</b>	IgG
<b>Clonality</b>	Polyclonal
<b>Source</b>	This TR Beta1 antibody was prepared from whole rabbit serum produced by repeated immunizations with a synthetic peptide corresponding to a region near the N-terminal of human THRB isoform 1 protein.
<b>Uniprot ID</b>	<b>P10828</b>
<b>Entrez</b>	<a href="https://www.ncbi.nlm.nih.gov/gene//7068">https://www.ncbi.nlm.nih.gov/gene//7068</a>
<b>Dilution Range</b>	ELISA: 1:200,000 – 1:220,000, IF Microscopy: 1:1000, Immunoprecipitation: 1:100, Western Blot: 1:500 - 1:2,000
<b>Application Notes</b>	This affinity purified antibody has been tested for use in ELISA, IF, and western blotting.



Anti-THRB1 Antibody -  
Western  
Blot