

## Product Datasheet

# Thyroid Hormone Receptor $\beta$ 1 (THRB1) (RABBIT) Antibody GRP3637

**Description** Anti-Thyroid Hormone Receptor  $\beta$ 1 (THRB1) (RABBIT) Antibody

**Species/Host** Rabbit

**Reactivity** Human, Mouse

**Conjugation** Unconjugated

**Tested Applications** ELISA, IF, IP, WB

**Form/Appearance** 0.02 M Potassium Phosphate, 0.15 M Sodium Chloride, pH 7.2

**Concentration** 1.66 mg/mL

**Note** For research use only.

**Isotype** IgG

**Clonality** Polyclonal

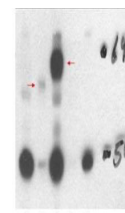
**Source** This TR Beta1 antibody was prepared from whole rabbit serum produced by repeated immunizations with a synthetic peptide corresponding to a region near the N-terminal of human THRB isoform 1 protein.

**Uniprot ID** **P10828**

**Entrez** <https://www.ncbi.nlm.nih.gov/gene//7068>

**Dilution Range** ELISA: 1:200,000 – 1:220,000, IF Microscopy: 1:1000, Immunoprecipitation: 1:100, Western Blot: 1:500 - 1:2,000

**Application Notes** This affinity purified antibody has been tested for use in ELISA, IF, and western blotting.



Anti-THRB1 Antibody -  
Western  
Blot