

Product Datasheet

Thyroid Hormone Receptor β 1 (THRB1) (RABBIT) Antibody GRP3636

Description Anti-Thyroid Hormone Receptor β 1 (THRB1) (RABBIT) Antibody

Species/Host Rabbit

Reactivity Human, Mouse

Conjugation Unconjugated

Tested Applications ELISA, IF, IP, WB

Form/Appearance 0.02 M Potassium Phosphate, 0.15 M Sodium Chloride, pH 7.2

Concentration 1.15 mg/mL

Note For research use only.

Isotype IgG

Clonality Polyclonal

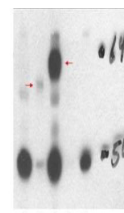
Source Anti-TR β 1 antibody is affinity purified from whole rabbit serum produced by repeated immunizations with a synthetic peptide corresponding to a region near the N-terminal of human THRB isoform 1 protein.

Uniprot ID **P10828**

Entrez <https://www.ncbi.nlm.nih.gov/gene//7068>

Dilution Range ELISA: 1:20,000 – 1:200,000, IF Microscopy: 1:1000, Immunoprecipitation: 1:100, Western Blot: 1:500 - 1:2,000

Application Notes This affinity purified antibody has been tested for use in ELISA, IF, and western blotting.



Anti-THRB1 Antibody -
Western
Blot