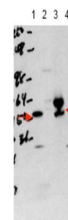


Product Datasheet

Thyroid Hormone Receptor alpha (THRA) (RABBIT) Antibody GRP3599

Description	Anti-Thyroid Hormone Receptor alpha (THRA) (RABBIT) Antibody
Species/Host	Rabbit
Reactivity	Human
Conjugation	Unconjugated
Tested Applications	ELISA, IF, IHC-P, IP, WB
Form/Appearance	0.02 M Potassium Phosphate, 0.15 M Sodium Chloride, pH 7.2
Concentration	0.89 mg/mL
Note	For research use only.
Isotype	IgG
Clonality	Polyclonal
Source	This affinity purified antibody was prepared from whole rabbit serum produced by repeated immunizations with a synthetic peptide corresponding to a region near the amino terminus of human THRA isoform 1 protein.
Uniprot ID	P10827-2
Entrez	https://www.ncbi.nlm.nih.gov/gene//7067
Dilution Range	ELISA: 1:300,000,Immunochemistry: 1:200,IF Microscopy: 1:200,Immunoprecipitation: 1:100,Western Blot: 1:500 - 1:2,000
Application Notes	This affinity purified antibody has been tested for use in ELISA and western blotting.



Anti-THRA Antibody -
Western
Blot