

Product Datasheet

Thyroid Hormone Receptor alpha (THRA) (RABBIT) Antibody GRP3598

Description Anti-Thyroid Hormone Receptor alpha (THRA) (RABBIT) Antibody

Species/Host Rabbit

Reactivity Human

Conjugation Unconjugated

Tested Applications ELISA, IF, IHC-P, IP, WB

Form/Appearance 0.02 M Potassium Phosphate, 0.15 M Sodium Chloride, pH 7.2

Concentration 1.0mg/mL

Note For research use only.

Isotype IgG

Clonality Polyclonal

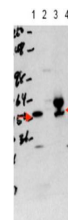
Source This affinity purified antibody was prepared from whole rabbit serum produced by repeated immunizations with a synthetic peptide corresponding to a region near the amino terminus of human THRA isoform 1 protein.

Uniprot ID **P10827-2**

Entrez <https://www.ncbi.nlm.nih.gov/gene//7067>

Dilution Range ELISA: 1:300,000, Immunochemistry: 1:200, IF Microscopy: 1:200, Immunoprecipitation: 1:100, Western Blot: 1:500 - 1:2,000

Application Notes This affinity purified antibody has been tested for use in ELISA and western blotting.



Anti-THRA Antibody -
Western
Blot