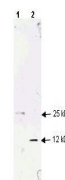


Product Datasheet

TGF beta 1 (RABBIT) Antibody GRP3414

Description	Anti-TGF beta 1 (RABBIT) Antibody
Species/Host	Rabbit
Reactivity	Human
Conjugation	Unconjugated
Tested Applications	ELISA, IF, WB
Form/Appearance	0.02 M Potassium Phosphate, 0.15 M Sodium Chloride, pH 7.2
Concentration	1.13 mg/ml
Note	For research use only.
Isotype	IgG
Clonality	Polyclonal
Source	TGF beta 1 Antibody was prepared from whole rabbit serum produced by repeated immunizations with a synthetic peptide corresponding to amino acids near the amino terminus of the mature growth factor (112 amino acids in length).
Uniprot ID	P01137
Entrez	https://www.ncbi.nlm.nih.gov/gene//7040
Dilution Range	ELISA: 1:10,000 - 1:20,000, IF Microscopy: User Optimized, Western Blot: 1:100 - 1:500



Anti-TGF Beta Antibody -
Western Blot