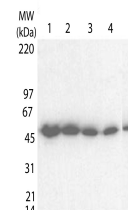


Product Datasheet

tetanus toxic fragment C (Rabbit) Antibody GRP1552

Species/Host	Rabbit
Reactivity	Bacteria
Conjugation	Unconjugated
Tested Applications	ELISA, WB
Form/Appearance	0.02 M Potassium Phosphate, 0.15 M Sodium Chloride, pH 7.2
Concentration	63 mg/mL
Note	For research use only.
Isotype	Antiserum
Clonality	Polyclonal
Source	This antibody was prepared from whole rabbit serum produced by repeated immunizations with a polyhistidine-tagged TTFC fusion protein expressed in E. coli corresponding to full length TTFC.
Uniprot ID	P04958
Entrez	https://www.ncbi.nlm.nih.gov/gene//1061100
Dilution Range	ELISA: 1:50,000-1:250,000, Western Blot: 1:1,000-1:40,000
Application Notes	This antibody has been tested for use in ELISA and western blot. For western blots expect a band of approximately 52 kDa in size corresponding to full-length TTFC. Specific conditions for reactivity should be optimized by the end user.



Anti-Tetanus Toxin
fragment C
(TTFC) Antibody - Western
Blot