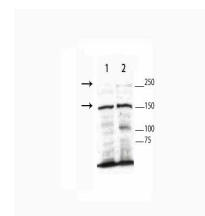


Product Datasheet

TET3 (RABBIT) Antibody GRP1606

Species/Host	Rabbit
Reactivity	Human
Conjugation	Unconjugated
Tested Applications	ELISA, WB
Form/Appearance	0.02 M Potassium Phosphate, 0.15 M Sodium Chloride, pH 7.2
Concentration	70mg/mL
Note	For research use only.
Isotype	Antiserum
Clonality	Polyclonal
Source	TET3 antibody was prepared from whole rabbit serum produced by repeated immunizations with a human TET-3 domain containing the N-terminal 160 amino acids of the protein.
Uniprot ID	O43151
Entrez	https://www.ncbi.nlm.nih.gov/gene//200424
Dilution Range	ELISA: 1:50,000,Western Blot: 1:5000
Application Notes	Tet3 antibody has been tested for use by ELISA and Western Blot. Specific conditions for reactivity should be optimized by the end user. Expect band at ~180kDa.



TET3 Antibody Western Blot