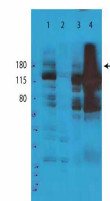


Product Datasheet

TET2 (RABBIT) Antibody GRP1604

Species/Host	Rabbit
Reactivity	Human
Conjugation	Unconjugated
Tested Applications	ELISA, WB
Form/Appearance	0.02 M Potassium Phosphate, 0.15 M Sodium Chloride, pH 7.2
Concentration	72.50 mg/mL
Note	For research use only.
Isotype	Antiserum
Clonality	Polyclonal
Source	TET2 antibody was prepared from whole rabbit serum produced by repeated immunizations with a human TET-2 domain containing the N-terminal 156 aminoacids of the protein.
Uniprot ID	Q6N021
Entrez	https://www.ncbi.nlm.nih.gov/gene//54790
Dilution Range	ELISA: 1:50,000, Western Blot: 1:5000
Application Notes	Tet2 antibody has been tested for use by Western Blot. Specific conditions for reactivity should be optimized by the end user. Expect band at ~230kDa and ~150kDa (isoforms).



TET2 Antibody Western Blot