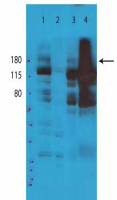


## Product Datasheet

### TET2 (RABBIT) Antibody GRP1603

<b>Species/Host</b>	Rabbit
<b>Reactivity</b>	Human
<b>Conjugation</b>	Unconjugated
<b>Tested Applications</b>	ELISA, WB
<b>Form/Appearance</b>	0.02 M Potassium Phosphate, 0.15 M Sodium Chloride, pH 7.2
<b>Concentration</b>	72.50 mg/mL
<b>Note</b>	For research use only.
<b>Isotype</b>	Antiserum
<b>Clonality</b>	Polyclonal
<b>Source</b>	TET2 antibody was prepared from whole rabbit serum produced by repeated immunizations with a human TET-2 domain containing the N-terminal 156 amino acids of the protein.
<b>Uniprot ID</b>	<b>Q6N021</b>
<b>Entrez</b>	<a href="https://www.ncbi.nlm.nih.gov/gene//54790">https://www.ncbi.nlm.nih.gov/gene//54790</a>
<b>Dilution Range</b>	ELISA: 1:50,000,Western Blot: 1:5000
<b>Application Notes</b>	Tet2 antibody has been tested for use by ELISA and Western Blot. Specific conditions for reactivity should be optimized by the end user. Expect band at ~230kDa and ~150kDa (isoforms).



TET2 Antibody Western Blot