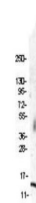


## Product Datasheet

### Swine MIP-1 $\beta$ (RABBIT) Antibody GRP3141

<b>Description</b>	Anti-Swine MIP-1 $\beta$ (RABBIT) Antibody
<b>Species/Host</b>	Rabbit
<b>Reactivity</b>	Pig
<b>Conjugation</b>	Unconjugated
<b>Tested Applications</b>	ELISA, WB
<b>Form/Appearance</b>	0.02 M Potassium Phosphate, 0.15 M Sodium Chloride, pH 7.2
<b>Concentration</b>	1.0 mg/mL
<b>Note</b>	For research use only.
<b>Isotype</b>	IgG
<b>Clonality</b>	Polyclonal
<b>Source</b>	This protein-A purified antibody was prepared from whole rabbit serum produced by repeated immunizations with recombinant protein raised in yeast, corresponding to the 69 amino acids of the mature swine CCL4/MIP1 $\beta$ protein.
<b>Uniprot ID</b>	<b>Q711P4</b>
<b>Entrez</b>	<a href="https://www.ncbi.nlm.nih.gov/gene//396668">https://www.ncbi.nlm.nih.gov/gene//396668</a>
<b>Dilution Range</b>	ELISA: >1:5,000, Western Blot: 1:500



Anti-MIP-1 $\beta$  Antibody -  
Western Blot