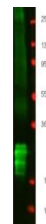


Product Datasheet

Swine Interferon Beta (RABBIT) Antibody GRP3144

Description	Anti-Swine Interferon Beta (RABBIT) Antibody
Species/Host	Rabbit
Reactivity	Pig
Conjugation	Unconjugated
Tested Applications	ELISA, WB
Form/Appearance	0.02 M Potassium Phosphate, 0.15 M Sodium Chloride, pH 7.2
Concentration	1.48 mg/mL
Note	For research use only.
Isotype	IgG
Clonality	Polyclonal
Source	This protein A purified antibody was prepared from whole rabbit antiserum produced by repeated immunizations with a recombinant protein raised in yeast corresponding to 164 amino acids of the mature swine IFN beta protein.
Uniprot ID	Q29412
Entrez	https://www.ncbi.nlm.nih.gov/gene/445459
Dilution Range	ELISA: 1:20,000, Western Blot: 1:500-1:2,000



Anti-Swine IFN Beta
Antibody
- Western Blot