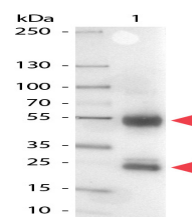


Product Datasheet

SWINE IgG (H&L) (RABBIT) Antibody Alkaline Phosphatase Conjugated GRP5292

Description	Anti-SWINE IgG (H&L) (RABBIT) Antibody Alkaline Phosphatase Conjugated
Species/Host	Rabbit
Conjugation	AP
Tested Applications	ELISA, IHC-P, WB
Form/Appearance	0.05 M Tris Chloride, 0.15M Sodium Chloride, 0.001M Magnesium Chloride, 0.0001M Zinc Chloride, 50% (v/v) Glycerol; pH 8.0
Concentration	1.0 mg/mL
Storage	Store vial at 4 °C before opening. DO NOT FREEZE. This product is stable at 4 °C as an undiluted liquid. Dilute only prior to immediate use. Freezing alkaline phosphatase conjugates will result in a substantial loss of enzymatic activity.
Note	For research use only.
Isotype	IgG
Clonality	Polyclonal
Source	Swine IgG whole molecule
Dilution Range	ELISA: 1:14,000,Immunochemistry: 1:200 - 1:1,000,Western Blot: 1:500 - 1:2,500
Application Notes	Anti-Swine IgG antibody is suitable for use in ELISA, immunohistochemistry, and western blot. Specific conditions for reactivity should be optimized by the end user.



Swine IgG (H&L) Antibody Alkaline Phosphatase Conjugated - Western Blot