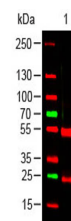


## Product Datasheet

### SWINE IgG (H&L) (RABBIT) Antibody GRP1796

|                            |   |
|----------------------------|---|
| <b>Species/Host</b>        | Rabbit  |
| <b>Conjugation</b>         | Unconjugated  |
| <b>Tested Applications</b> | ELISA, IHC-P, WB  |
| <b>Form/Appearance</b>     | 0.01 M Sodium Phosphate, 0.15 M Sodium Chloride, pH 7.2   |
| <b>Concentration</b>       | 90 mg/mL  |
| <b>Note</b>                | For research use only.  |
| <b>Isotype</b>             | Antiserum   |
| <b>Clonality</b>           | Polyclonal  |
| <b>Purity</b>              | This product was prepared from monospecific antiserum by a delipidation and defibrination. Assay by immunoelectrophoresis resulted in a single precipitin arc against anti-rabbit serum, Swine IgG and Swine Serum. |
| <b>Source</b>              | Swine IgG whole molecule  |
| <b>Dilution Range</b>      | ELISA: 1:20,000 - 1:100,000, Immunochemistry: 1:1,000 - 1:5,000, Western Blot: 1:2,000 - 1:10,000   |
| <b>Application Notes</b>   | Anti-Swine IgG antibody is suitable for use in ELISA, immunohistochemistry, and western blot. Specific conditions for reactivity should be optimized by the end user.   |



Western Blot - Swine IgG  
(H&L)  
Antibody