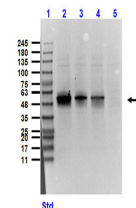


## Product Datasheet

# SUCROSE PHOSPHORYLASE (E.coli) (GOAT) Antibody GRP1843

<b>Description</b>	Sucrose phosphorylase catalyzes as Sucrose + phosphate = D-fructose + alpha-D-glucose 1-phosphate.
<b>Species/Host</b>	Goat
<b>Reactivity</b>	E.Coli
<b>Conjugation</b>	Unconjugated
<b>Tested Applications</b>	ELISA, IP, WB
<b>Form/Appearance</b>	0.02 M Potassium Phosphate, 0.15 M Sodium Chloride, pH 7.2
<b>Concentration</b>	1 mg/mL
<b>Note</b>	For research use only.
<b>Isotype</b>	IgG
<b>Clonality</b>	Polyclonal
<b>Source</b>	Sucrose Phosphorylase [E.coli]
<b>Uniprot ID</b>	<b>P76041</b>
<b>Entrez</b>	<a href="https://www.ncbi.nlm.nih.gov/gene//4492194">https://www.ncbi.nlm.nih.gov/gene//4492194</a>
<b>Dilution Range</b>	ELISA: 1:5,000 - 1:20,000, Immunoprecipitation: 1:100, Western Blot: 1:500 - 1:5,000



Western Blot of Goat  
Anti-Sucrose  
Phosphorylase  
Antibody