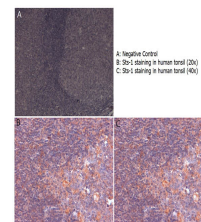


## Product Datasheet

### Sts-1 (RABBIT) Antibody GRP3496

<b>Description</b>	Anti-Sts-1 (RABBIT) Antibody
<b>Species/Host</b>	Rabbit
<b>Reactivity</b>	Human, Mouse
<b>Conjugation</b>	Unconjugated
<b>Tested Applications</b>	ELISA, IF, IHC-P, WB
<b>Form/Appearance</b>	0.02 M Potassium Phosphate, 0.15 M Sodium Chloride, pH 7.2
<b>Concentration</b>	0.95 mg/mL
<b>Note</b>	For research use only.
<b>Isotype</b>	IgG
<b>Clonality</b>	Polyclonal
<b>Source</b>	This affinity purified antibody was prepared from whole rabbit serum produced by repeated immunizations with a synthetic peptide corresponding to the C-terminus of mouse Sts-1.
<b>Uniprot ID</b>	<b>Q8TF42</b>
<b>Entrez</b>	<a href="https://www.ncbi.nlm.nih.gov/gene//84959">https://www.ncbi.nlm.nih.gov/gene//84959</a>
<b>Dilution Range</b>	ELISA: 1:2,000 - 1:10,000, Immunochemistry: 4µg /ml, IF Microscopy: User Optimized, Western Blot: 1:500 - 1:3,000
<b>Application Notes</b>	This affinity purified antibody has been tested for use in ELISA, IHC, and by western blot. Specific conditions for reactivity should be optimized by the end user. Expect a band



Anti-Sts-1 Antibody -  
Immunohistochemistry