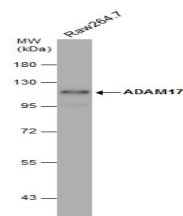


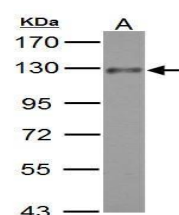
Product Datasheet

ADAM17 antibody [C2C3], C-term GRP103

Description	This gene encodes a member of the ADAM (a disintegrin and metalloprotease domain) family. Members of this family are membrane-anchored proteins structurally related to snake venom disintegrins, and have been implicated in a variety of biologic processes involving cell-cell and cell-matrix interactions, including fertilization, muscle development, and neurogenesis. The protein encoded by this gene functions as a tumor necrosis factor-alpha converting enzyme; binds mitotic arrest deficient 2 protein; and also plays a prominent role in the activation of the Notch signaling pathway. [provided by RefSeq]
Species/Host	Rabbit
Reactivity	Human, Mouse, Rat
Conjugation	Unconjugated
Tested Applications	IHC-P, WB
Immunogen	Recombinant protein encompassing a sequence within the C-terminus region of human ADAM17. The exact sequence is proprietary.
Form/Appearance	Liquid: 1XPBS, 40% Glycerol (pH7). 0.01% Thimerosal was added as a preservative.
Concentration	1 mg/ml
Storage	Store as concentrated solution. Centrifuge briefly prior to opening vial. For short-term storage (1-2 weeks), store at 4°C. For long-term storage, aliquot and store at -20°C or below. Avoid multiple freeze-thaw cycles.
Note	For research use only.
Isotype	IgG
Clonality	Polyclonal
Purity	Purified by antigen-affinity chromatography.
Uniprot ID	P78536
Entrez	6868
Dilution Range	WB: 1:500-1:3000, IHC-P: 1:100-1:1000



Whole cell extract (30 µg) was separated by 7.5% SDS-PAGE, and the membrane was blotted with ADAM17 antibody [C2C3], C-term (GRP555) diluted at 1:500. The HRP-conjugated anti-rabbit IgG antibody was used to detect the primary antibody.



ADAM17 antibody [C2C3], C-term detects ADAM17 protein by western blot analysis. A. 30 µg K562 whole cell lysate/extract