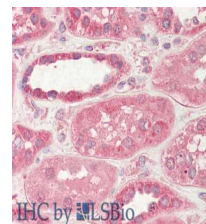


## Product Datasheet

### STIM2 (SHEEP) Antibody GRP4100

<b>Description</b>	Anti-STIM2 (SHEEP) Antibody
<b>Species/Host</b>	Sheep
<b>Reactivity</b>	Human
<b>Conjugation</b>	Unconjugated
<b>Tested Applications</b>	ELISA, IHC-P, WB
<b>Form/Appearance</b>	0.02 M Potassium Phosphate, 0.15 M Sodium Chloride, pH 7.2
<b>Concentration</b>	1.1 mg/mL
<b>Note</b>	For research use only.
<b>Isotype</b>	IgG
<b>Clonality</b>	Polyclonal
<b>Source</b>	Stim II affinity purified antibody was prepared from whole sheep serum produced by repeated immunizations with a synthetic peptide near the C-terminus of human Stim II.
<b>Uniprot ID</b>	<b>Q9P246</b>
<b>Dilution Range</b>	ELISA: 1: 10,000, Immunochemistry: 5 µg /mL, Western Blot: 1 µg/ml
<b>Application Notes</b>	Anti-Stim II antibody is useful for ELISA, immunohistochemistry, and Western Blot. Specific conditions for reactivity should be optimized by the end user. Expect a band approximately ~84kDa corresponding to the appropriate cell lysate or extract.



Immunohistochemistry of  
anti-STIM2 antibody