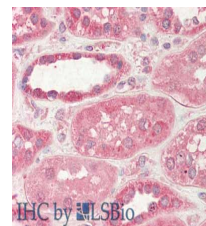


Product Datasheet

STIM2 (SHEEP) Antibody GRP4100

Description	Anti-STIM2 (SHEEP) Antibody
Species/Host	Sheep
Reactivity	Human
Conjugation	Unconjugated
Tested Applications	ELISA, IHC-P, WB
Form/Appearance	0.02 M Potassium Phosphate, 0.15 M Sodium Chloride, pH 7.2
Concentration	1.1 mg/mL
Note	For research use only.
Isotype	IgG
Clonality	Polyclonal
Source	Stim II affinity purified antibody was prepared from whole sheep serum produced by repeated immunizations with a synthetic peptide near the C-terminus of human Stim II.
Uniprot ID	Q9P246
Dilution Range	ELISA: 1: 10,000, Immunochemistry: 5 µg /mL, Western Blot: 1ug/ml
Application Notes	Anti-Stim II antibody is useful for ELISA, immunohistochemistry, and Western Blot. Specific conditions for reactivity should be optimized by the end user. Expect a band approximately ~84kDa corresponding to the appropriate cell lysate or extract.



Immunohistochemistry of anti-STIM2 antibody