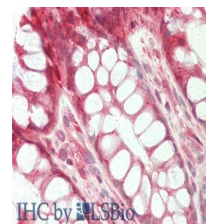


Product Datasheet

STIM1 (RABBIT) Antibody GRP3891

Description	Anti-STIM1 (RABBIT) Antibody
Species/Host	Rabbit
Reactivity	Human, Mouse
Conjugation	Unconjugated
Tested Applications	ELISA, IHC-P, WB
Form/Appearance	0.02 M Potassium Phosphate, 0.15 M Sodium Chloride, pH 7.2
Concentration	1.03 mg/mL
Note	For research use only.
Isotype	IgG
Clonality	Polyclonal
Source	Stim 1 affinity purified antibody was prepared from whole rabbit serum produced by repeated immunizations with a synthetic peptide near the C-terminus of human Stim 1.
Uniprot ID	Q13586
Dilution Range	ELISA: 1: 10,000, Immunochemistry: 5ug/ml, Western Blot: 1ug/ml
Application Notes	Anti-Stim I antibody is useful for ELISA, immunohistochemistry, and Western Blot. Specific conditions for reactivity should be optimized by the end user. Expect a band approximately ~77kDa corresponding to the appropriate cell lysate or extract.



IHC by USBio
Immunohistochemistry of
anti-GOK / STIM1 antibody