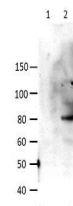


## Product Datasheet

### STAT6 pY641 (RABBIT) Antibody GRP3705

<b>Description</b>	Anti-STAT6 pY641 (RABBIT) Antibody
<b>Species/Host</b>	Rabbit
<b>Reactivity</b>	Human
<b>Conjugation</b>	Unconjugated
<b>Tested Applications</b>	ELISA, IHC-P, WB
<b>Form/Appearance</b>	0.02 M Potassium Phosphate, 0.15 M Sodium Chloride, pH 7.2
<b>Concentration</b>	1.13 mg/mL
<b>Note</b>	For research use only.
<b>Isotype</b>	IgG
<b>Clonality</b>	Polyclonal
<b>Source</b>	STAT6 phospho Y641 Antibody was prepared from whole rabbit serum produced by repeated immunizations with a phosphorylated synthetic peptide corresponding to residues surrounding Tyrosine 641 of human STAT6 protein.
<b>Uniprot ID</b>	<b>P42226</b>
<b>Entrez</b>	<a href="https://www.ncbi.nlm.nih.gov/gene//6778">https://www.ncbi.nlm.nih.gov/gene//6778</a>
<b>Dilution Range</b>	ELISA: 1:32,000,Immunochemistry: User Optimized,Western Blot: 1:1000



Anti-STAT6 pY641  
Antibody -  
Western Blot