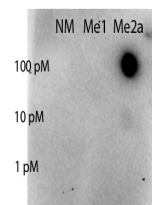


Product Datasheet

STAT5 [Asym-dimethyl Arg31] (RABBIT) Antibody GRP3727

Description	Anti-STAT5 [Asym-dimethyl Arg31] (RABBIT) Antibody
Species/Host	Rabbit
Reactivity	Human
Conjugation	Unconjugated
Tested Applications	ELISA, WB
Form/Appearance	0.02 M Potassium Phosphate, 0.15 M Sodium Chloride, pH 7.2
Concentration	1.05 mg/ml
Note	For research use only.
Isotype	IgG
Clonality	Polyclonal
Source	STAT5A [Asym-dimethyl Arg31] affinity purified antibody was prepared from whole rabbit serum produced by repeated immunizations with a synthetic monomethylated peptide surrounding Arginine 31 of human STAT.
Uniprot ID	P42229
Dilution Range	ELISA: 1:5000, Western Blot: 1:500



Anti-STAT5 R31-Me2a
Antibody -
Dot Blot