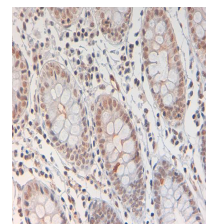


Product Datasheet

STAT3 pY705 (RABBIT) Antibody GRP3700

Description	Anti-STAT3 pY705 (RABBIT) Antibody
Species/Host	Rabbit
Reactivity	Human
Conjugation	Unconjugated
Tested Applications	ELISA, IHC-P, WB
Form/Appearance	0.02 M Potassium Phosphate, 0.15 M Sodium Chloride, pH 7.2
Concentration	0.9 mg/mL
Note	For research use only.
Isotype	IgG
Clonality	Polyclonal
Source	This affinity purified STAT3 antibody was prepared by repeated immunizations with a phosphorylated synthetic peptide corresponding to the region of amino acids surrounding tyrosine 705 of human Stat3.
Uniprot ID	P40763
Entrez	https://www.ncbi.nlm.nih.gov/gene//6774
Dilution Range	ELISA: 1:60,000-1:130,000,Immunochemistry: User Optimized,Western Blot: 1 µg /mL



IHC - STAT3 pY705
Antibody