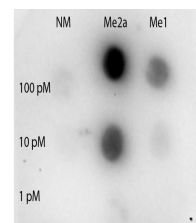


## Product Datasheet

### STAT3 [Asym-dimethyl Arg31] (RABBIT) Antibody GRP3723

<b>Description</b>	Anti-STAT3 [Asym-dimethyl Arg31] (RABBIT) Antibody
<b>Species/Host</b>	Rabbit
<b>Reactivity</b>	Human
<b>Conjugation</b>	Unconjugated
<b>Tested Applications</b>	ELISA, WB
<b>Form/Appearance</b>	0.02 M Potassium Phosphate, 0.15 M Sodium Chloride, pH 7.2
<b>Concentration</b>	0.83 mg/ml
<b>Note</b>	For research use only.
<b>Isotype</b>	IgG
<b>Clonality</b>	Polyclonal
<b>Source</b>	STAT3 [Asym-dimethyl Arg31] affinity purified antibody was prepared from whole rabbit serum produced by repeated immunizations with a synthetic monomethylated peptide surrounding Arginine 31 of human STAT.
<b>Uniprot ID</b>	<b>P40763</b>
<b>Dilution Range</b>	ELISA: 1:5000, Western Blot: 0.1-0.05 µg /ml



STAT3 R31-Me2a Dot Blot