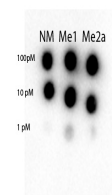


Product Datasheet

STAT3 (RABBIT) Antibody GRP3729

Description	Anti-STAT3 (RABBIT) Antibody
Species/Host	Rabbit
Reactivity	Human
Conjugation	Unconjugated
Tested Applications	ELISA, WB
Form/Appearance	0.02 M Potassium Phosphate, 0.15 M Sodium Chloride, pH 7.2
Concentration	1.0 mg/mL
Note	For research use only.
Isotype	IgG
Clonality	Polyclonal
Source	STAT3 affinity purified antibody was prepared from whole rabbit serum produced by repeated immunizations with synthetic monomethylated or asymmetric dimethylated peptides surrounding Arginine 31 of human STAT.
Uniprot ID	P40763
Dilution Range	ELISA: 1:5000, Western Blot: 1:500



Anti-STAT3 Antibody - Dot Blot