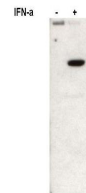


## Product Datasheet

### STAT2 pY690 (RABBIT) Antibody GRP3631

<b>Description</b>	Anti-STAT2 pY690 (RABBIT) Antibody
<b>Species/Host</b>	Rabbit
<b>Reactivity</b>	Human, Mouse
<b>Conjugation</b>	Unconjugated
<b>Tested Applications</b>	ELISA, IHC-P, WB
<b>Form/Appearance</b>	0.02 M Potassium Phosphate, 0.15 M Sodium Chloride, pH 7.2
<b>Concentration</b>	1.15 mg/mL
<b>Note</b>	For research use only.
<b>Isotype</b>	IgG
<b>Clonality</b>	Polyclonal
<b>Source</b>	This affinity purified antibody was prepared from whole rabbit serum produced by repeated immunizations with a synthetic peptide corresponding to a C-terminus region near phospho Tyrosine 690 of human STAT2 protein.
<b>Uniprot ID</b>	<b>P52630</b>
<b>Entrez</b>	<a href="https://www.ncbi.nlm.nih.gov/gene//6773">https://www.ncbi.nlm.nih.gov/gene//6773</a>
<b>Dilution Range</b>	ELISA: 1:85,000,Immunochemistry: 1:100,Western Blot: 1:500 – 1:1000



Anti-Stat2pY690 Antibody -  
Western Blot