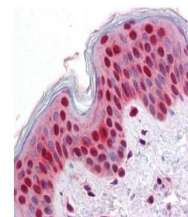


## Product Datasheet

### STAT2 (MOUSE) Monoclonal Antibody GRP2109

<b>Description</b>	Anti-STAT2 (MOUSE) Monoclonal Antibody
<b>Species/Host</b>	Mouse
<b>Reactivity</b>	Human
<b>Conjugation</b>	Unconjugated
<b>Tested Applications</b>	ELISA, IHC-P, WB
<b>Form/Appearance</b>	0.02 M Potassium Phosphate, 0.15 M Sodium Chloride, pH 7.2
<b>Concentration</b>	1.0 mg/mL
<b>Note</b>	For research use only.
<b>Isotype</b>	IgG2a
<b>Clonality</b>	Monoclonal
<b>Source</b>	This monoclonal antibody was produced by repeated immunizations with a synthetic peptide corresponding to residues surrounding Y690 of mouse STAT2 protein.
<b>Clone ID</b>	19G8.H2.H6
<b>Uniprot ID</b>	<a href="#">Q9WVL2</a>
<b>Entrez</b>	<a href="https://www.ncbi.nlm.nih.gov/gene//6773">https://www.ncbi.nlm.nih.gov/gene//6773</a>
<b>Dilution Range</b>	ELISA: 1:5,000 - 1:10,000, Immunochemistry: 1:2.5 µg/mL, Western Blot: 1:1000



Anti-Stat2 Monoclonal Antibody  
- Immunohistochemistry