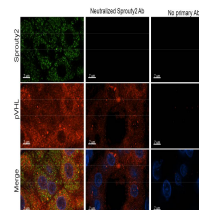


Product Datasheet

Sprouty-2 (RABBIT) Antibody GRP3709

Description	Anti-Sprouty-2 (RABBIT) Antibody
Species/Host	Rabbit
Reactivity	Human
Conjugation	Unconjugated
Tested Applications	ELISA, IF, IHC-P, WB
Form/Appearance	0.02 M Potassium Phosphate, 0.15 M Sodium Chloride, pH 7.2
Concentration	1.04 mg/mL
Note	For research use only.
Isotype	IgG
Clonality	Polyclonal
Source	Anti-Sprouty-2 affinity purified antibody was purified from monospecific rabbit antiserum prepared via repeated immunizations with peptide corresponding to an internal region of human sprouty-2.
Uniprot ID	O43597
Entrez	https://www.ncbi.nlm.nih.gov/gene//10253
Dilution Range	ELISA: User Optimized, Immunochemistry: 10 µg /mL, IF Microscopy: User Optimized, Western Blot: 1:500-1:5,000
Application Notes	Anti-Sprouty-2 antibody is suitable for ELISA, Immunofluorescence, Immunohistochemistry, and western blotting. Specific conditions for reactivity should be optimized by the end user.



Immunohistochemistry -
Sprouty-2 antibody