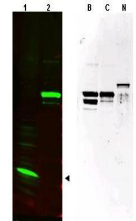


Product Datasheet

SPANX (pan) (RABBIT) Antibody GRP3528

Description	Anti-SPANX (pan) (RABBIT) Antibody
Species/Host	Rabbit
Reactivity	Human
Conjugation	Unconjugated
Tested Applications	ELISA, WB
Form/Appearance	0.02 M Potassium Phosphate, 0.15 M Sodium Chloride, pH 7.2
Concentration	1.0 mg/mL
Note	For research use only.
Isotype	IgG
Clonality	Polyclonal
Source	This affinity purified antibody was prepared from whole rabbit serum produced by repeated immunizations with a synthetic peptide corresponding to an internal region near amino acids 25-50 of human SPANX protein.
Uniprot ID	Q9NY87
Entrez	https://www.ncbi.nlm.nih.gov/gene//64663
Dilution Range	ELISA: 1:10,000 - 1:50,000, Western Blot: 1:500 - 1:3,000
Application Notes	This affinity purified antibody has been tested for use in ELISA and by western blot. Specific conditions for reactivity should be optimized by the end user. Expect a band ~97kDa.



Anti-SPANX (pan)
Antibody -
Western Blot