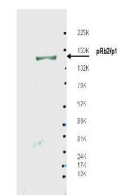


## Product Datasheet

### Spa310 (pRb2/p130) (RABBIT) Antibody GRP3652

<b>Description</b>	Anti-Spa310 (pRb2/p130) (RABBIT) Antibody
<b>Species/Host</b>	Rabbit
<b>Reactivity</b>	Human
<b>Conjugation</b>	Unconjugated
<b>Tested Applications</b>	ELISA, IP, WB
<b>Form/Appearance</b>	0.02 M Potassium Phosphate, 0.15 M Sodium Chloride, pH 7.2
<b>Concentration</b>	1.39 mg/mL
<b>Note</b>	For research use only.
<b>Isotype</b>	IgG
<b>Clonality</b>	Polyclonal
<b>Source</b>	This affinity purified antibody was prepared by repeated immunizations with a synthetic peptide corresponding to the Spa310 sequence of pRb2/p130 protein. A residue of cysteine was added to facilitate coupling.
<b>Uniprot ID</b>	<b>Q08999</b>
<b>Entrez</b>	<a href="https://www.ncbi.nlm.nih.gov/gene//5934">https://www.ncbi.nlm.nih.gov/gene//5934</a>
<b>Dilution Range</b>	ELISA: 1:75,000 - 1:100,000, Immunoprecipitation: 1:100, Western Blot: 1:500 - 1:5,000



Anti-Spa310 Antibody -  
Western  
Blot