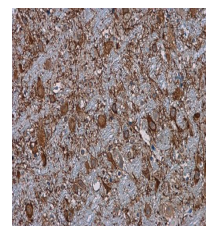


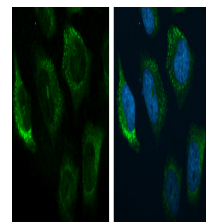
## Product Datasheet

### C3 antibody [C3], C-term GRP102

<b>Description</b>	Complement component C3 plays a central role in the activation of complement system. Its activation is required for both classical and alternative complement activation pathways. People with C3 deficiency are susceptible to bacterial infection. [provided by RefSeq]
<b>Species/Host</b>	Rabbit
<b>Reactivity</b>	Human, Mouse
<b>Conjugation</b>	Unconjugated
<b>Tested Applications</b>	ICC, IF, IHC-P, IP, WB
<b>Immunogen</b>	Recombinant protein encompassing a sequence within the C-terminus region of human C3. The exact sequence is proprietary.
<b>Form/Appearance</b>	Liquid: 1XPBS, 1% BSA, 20% Glycerol (pH7). 0.025% ProClin 300 was added as a preservative.
<b>Concentration</b>	0.08 mg/ml
<b>Storage</b>	Store as concentrated solution. Centrifuge briefly prior to opening vial. For short-term storage (1-2 weeks), store at 4°C. For long-term storage, aliquot and store at -20°C or below. Avoid multiple freeze-thaw cycles.
<b>Note</b>	For research use only.
<b>Isotype</b>	IgG
<b>Clonality</b>	Polyclonal
<b>Purity</b>	Purified by antigen-affinity chromatography.
<b>Uniprot ID</b>	<b>P01024</b>
<b>Entrez</b>	<b>718</b>
<b>Dilution Range</b>	WB: 1:500-1:3000, ICC: 1:100-1:1000, IHC-P: 1:100-1:1000, IP: 1:100-1:500



C3 antibody [C3], C-term detects C3 protein at cytoplasm in mouse brain by immunohistochemical analysis.  
Sample: Paraffin-embedded mouse brain. C3 antibody [C3], C-term (GRP554) diluted at 1:500.



C3 antibody [C3], C-term detects C3 protein at cytoplasm by immunofluorescent analysis. Sample: HeLa cells were fixed in 4% paraformaldehyde at RT for 15 min. Green: C3 protein stained by C3 antibody [C3], C-term (GRP554) diluted at 1:200. Blue: Hoechst 3334