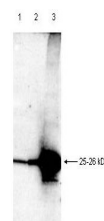


Product Datasheet

Smac/DIABLO (RABBIT) Antibody GRP1528

Species/Host	Rabbit
Reactivity	Human
Conjugation	Unconjugated
Tested Applications	ELISA, IP, WB
Form/Appearance	0.02 M Potassium Phosphate, 0.15 M Sodium Chloride, pH 7.2
Concentration	85 mg/mL
Note	For research use only.
Isotype	Antiserum
Clonality	Polyclonal
Purity	This antiserum is directed against human Smac/DIABLO and is useful in determining its presence in various assays.
Source	This whole rabbit serum was prepared by repeated immunizations with recombinant His6-tagged human Smac/DIABLO protein (amino acids 56-239).
Uniprot ID	Q9NR28
Entrez	https://www.ncbi.nlm.nih.gov/gene//56616
Dilution Range	ELISA: 1:5,000 - 1:20,000, Immunoprecipitation: 1:100, Western Blot: 1:1,000 - 1:2,000

Application Notes This antibody reacts with human Smac/DIABLO protein by immunoblot. Lysates from human HeLa and LNCaP cells are positive for Smac/DIABLO. Other animal tissues have not been tested.



Anti-Smac Antibody -
Western
Blot