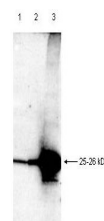


## Product Datasheet

### Smac/DIABLO (RABBIT) Antibody GRP1528

<b>Species/Host</b>	Rabbit
<b>Reactivity</b>	Human
<b>Conjugation</b>	Unconjugated
<b>Tested Applications</b>	ELISA, IP, WB
<b>Form/Appearance</b>	0.02 M Potassium Phosphate, 0.15 M Sodium Chloride, pH 7.2
<b>Concentration</b>	85 mg/mL
<b>Note</b>	For research use only.
<b>Isotype</b>	Antiserum
<b>Clonality</b>	Polyclonal
<b>Purity</b>	This antiserum is directed against human Smac/DIABLO and is useful in determining its presence in various assays.
<b>Source</b>	This whole rabbit serum was prepared by repeated immunizations with recombinant His6-tagged human Smac/DIABLO protein (amino acids 56-239).
<b>Uniprot ID</b>	<b>Q9NR28</b>
<b>Entrez</b>	<a href="https://www.ncbi.nlm.nih.gov/gene//56616">https://www.ncbi.nlm.nih.gov/gene//56616</a>
<b>Dilution Range</b>	ELISA: 1:5,000 - 1:20,000, Immunoprecipitation: 1:100, Western Blot: 1:1,000 - 1:2,000

**Application Notes** This antibody reacts with human Smac/DIABLO protein by immunoblot. Lysates from human HeLa and LNCaP cells are positive for Smac/DIABLO. Other animal tissues have not been tested.



Anti-Smac Antibody -  
Western  
Blot