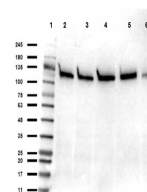


Product Datasheet

SIRT1 (RABBIT) Antibody GRP3782

Description	Anti-SIRT1 (RABBIT) Antibody
Species/Host	Rabbit
Reactivity	Human
Conjugation	Unconjugated
Tested Applications	ELISA, WB
Form/Appearance	0.02 M Potassium Phosphate, 0.15 M Sodium Chloride, pH 7.2
Concentration	1.07 mg/ml
Note	For research use only.
Isotype	IgG
Clonality	Polyclonal
Source	Affinity purified Anti-SIRT1 antibody was prepared from whole rabbit serum produced by repeated immunizations with a synthetic peptide near the c-terminal of human SIRT1 protein.
Uniprot ID	Q96EB6
Entrez	https://www.ncbi.nlm.nih.gov/gene/23411
Dilution Range	ELISA: 5.0 ug/ml, Western Blot: 1.0 ug/ml



Western blot of Anti-SIRT1 Antibody