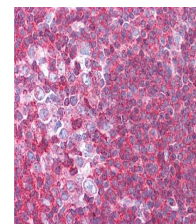


Product Datasheet

Sipa1 (RABBIT) Antibody GRP3596

Description	Anti-Sipa1 (RABBIT) Antibody
Species/Host	Rabbit
Reactivity	Human, Mouse
Conjugation	Unconjugated
Tested Applications	ELISA, IHC-P, WB
Form/Appearance	0.02 M Potassium Phosphate, 0.15 M Sodium Chloride, pH 7.2
Concentration	1.25 mg/mL
Note	For research use only.
Isotype	IgG
Clonality	Polyclonal
Source	This affinity purified antibody was prepared from whole rabbit serum produced by repeated immunizations with a synthetic peptide corresponding to a region near the amino terminus of mouse Sipal.
Uniprot ID	P46062
Entrez	https://www.ncbi.nlm.nih.gov/gene//20469
Dilution Range	ELISA: 1:20,000,Immunochemistry: 1.25-2.5 µg /ml,Western Blot: 1:1,000 - 1:5,000



Anti-Sipa1 Antibody -
Immunohistochemistry

Application Notes This affinity purified antibody has been tested for use in ELISA, immunohistochemistry, and western blotting. Specific conditions for reactivity should be optimized by the end user. Expect a band approximately 130 kDa in size corresponding