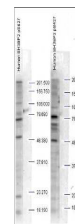


## Product Datasheet

### SH3BP2 pS427 (RABBIT) Antibody GRP3422

<b>Description</b>	Anti-SH3BP2 pS427 (RABBIT) Antibody
<b>Species/Host</b>	Rabbit
<b>Reactivity</b>	Human, Mouse, Rat
<b>Conjugation</b>	Unconjugated
<b>Tested Applications</b>	ELISA, IP, WB
<b>Form/Appearance</b>	0.02 M Potassium Phosphate, 0.15 M Sodium Chloride, pH 7.2
<b>Concentration</b>	1.0 mg/mL
<b>Note</b>	For research use only.
<b>Isotype</b>	IgG
<b>Clonality</b>	Polyclonal
<b>Purity</b>	This product is an affinity purified antibody produced by immunoaffinity chromatography and is phospho specific for human pS427.
<b>Source</b>	This affinity purified antibody was prepared from whole rabbit serum produced by repeated immunizations with a synthetic peptide corresponding to an internal region near aa 415-440 of Human SH3BP3 protein (SH3 Domain Binding Protein 2).
<b>Uniprot ID</b>	<b>P78314</b>
<b>Entrez</b>	<a href="https://www.ncbi.nlm.nih.gov/gene//10825">https://www.ncbi.nlm.nih.gov/gene//10825</a>
<b>Dilution Range</b>	ELISA: 1:2,000 - 1:10,000, Immunoprecipitation: 1:100, Western Blot: 1:500 - 1:2,000



Anti-SH3BP2 pS427  
Antibody -  
Western Blot