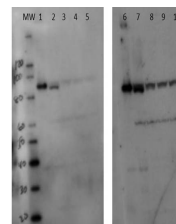


Product Datasheet

Setdb2 (RABBIT) Antibody GRP2403

Description	Anti-Setdb2 (RABBIT) Antibody
Species/Host	Rabbit
Reactivity	Human, Mouse
Conjugation	Unconjugated
Tested Applications	ELISA, WB
Form/Appearance	0.02 M Potassium Phosphate, 0.15 M Sodium Chloride, pH 7.2
Concentration	0.98 mg/mL
Note	For research use only.
Isotype	IgG
Clonality	Polyclonal
Source	Setdb2 antibody was prepared from whole rabbit serum produced by repeated immunizations with a full length protein corresponding to mouse Setdb2.
Uniprot ID	Q8C267
Dilution Range	ELISA: 1:2,500 - 1:10,000, Western Blot: 1:10,000 - 1:100,000



Western Blot - anti-Setdb2