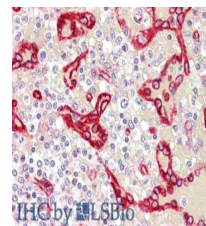


Product Datasheet

SDPR (RABBIT) Antibody GRP3878

Description	Anti-SDPR (RABBIT) Antibody
Species/Host	Rabbit
Reactivity	Human
Conjugation	Unconjugated
Tested Applications	ELISA, IF, IHC-P, WB
Form/Appearance	0.02 M Potassium Phosphate, 0.15 M Sodium Chloride, pH 7.2
Concentration	1.02 mg/ml
Note	For research use only.
Isotype	IgG
Clonality	Polyclonal
Source	SDPR affinity purified antibody was prepared from whole rabbit serum produced by repeated immunizations with a synthetic peptide corresponding to the C-terminal region of human SDPR.
Uniprot ID	O95810
Entrez	https://www.ncbi.nlm.nih.gov/gene//8436
Dilution Range	ELISA: 1:20,000 - 1:60,000, Immunochemistry: 1:100-1:500, IF Microscopy: 1:100-1:500, Western Blot: 1 µg /ml

Application Notes Anti-SDPR antibody is useful for ELISA, Immunostaining, and Western Blot. Specific conditions for reactivity should be optimized by the end user. Expect a band approximately ~40.5 kDa corresponding to the appropriate cell lysate or extract.



Immunohistochemistry of anti-SDR/SDPR antibody