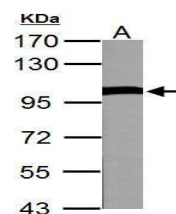


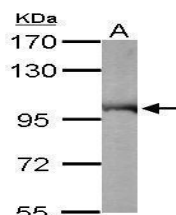
## Product Datasheet

### VCP antibody GRP100

<b>Description</b>	The protein encoded by this gene is a member of a family that includes putative ATP-binding proteins involved in vesicle transport and fusion, 26S proteasome function, and assembly of peroxisomes. This protein, as a structural protein, is associated with clathrin, and heat-shock protein Hsc70, to form a complex. It has been implicated in a number of cellular events that are regulated during mitosis, including homotypic membrane fusion, spindle pole body function, and ubiquitin-dependent protein degradation. [provided by RefSeq]
<b>Species/Host</b>	Rabbit
<b>Reactivity</b>	Human, Mouse, Rat
<b>Conjugation</b>	Unconjugated
<b>Tested Applications</b>	ICC, IF, IHC-Fr, IHC-P, IP, WB
<b>Immunogen</b>	Recombinant protein encompassing a sequence within the C-terminus region of human VCP. The exact sequence is proprietary.
<b>Form/Appearance</b>	Liquid: 1XPBS, 20% Glycerol (pH7). 0.025% ProClin 300 was added as a preservative.
<b>Concentration</b>	1 mg/ml
<b>Storage</b>	Store as concentrated solution. Centrifuge briefly prior to opening vial. For short-term storage (1-2 weeks), store at 4°C. For long-term storage, aliquot and store at -20°C or below. Avoid multiple freeze-thaw cycles.
<b>Note</b>	For research use only.
<b>Isotype</b>	IgG
<b>Clonality</b>	Polyclonal
<b>Purity</b>	Purified by antigen-affinity chromatography.
<b>Uniprot ID</b>	<b>P55072</b>
<b>Entrez</b>	<b>7415</b>
<b>Dilution Range</b>	WB: 1:500-1:10000, ICC: 1:100-1:1000, IHC-P: 1:100-1:1000, IHC-Fr: 1:100-1:1000, IP: 1:100-1:500



VCP antibody detects VCP protein by western blot analysis. A: 50 µg Rat brain lysate/extract 7.5% SDS-PAGE VCP antibody (GRP552) dilution: 1:10000 The HRP-conjugated anti-rabbit IgG antibody was used to detect the primary antibody.



Sample (50 µg of whole cell lysate) A: Mouse brain 7.5% SDS PAGE GRP552 diluted at 1:10000 The HRP-conjugated anti-rabbit IgG antibody was used to detect the primary antibody.