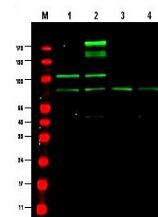


## Product Datasheet

### RREB1 (RABBIT) Antibody GRP2321

<b>Description</b>	Anti-RREB1 (RABBIT) Antibody
<b>Species/Host</b>	Rabbit
<b>Reactivity</b>	Mouse
<b>Conjugation</b>	Unconjugated
<b>Tested Applications</b>	ELISA, WB
<b>Form/Appearance</b>	0.02 M Potassium Phosphate, 0.15 M Sodium Chloride, pH 7.2
<b>Concentration</b>	1.0 mg/ml
<b>Note</b>	For research use only.
<b>Isotype</b>	IgG
<b>Clonality</b>	Polyclonal
<b>Purity</b>	Anti-RREB1 antibody is directed against the mouse RREB1 protein. The product was Protein A purified from monospecific antiserum by immunoaffinity purification. Reactivity against homologues from other sources is not known.
<b>Source</b>	Anti-RREB1 antibody was prepared from whole rabbit serum produced by repeated immunizations with a recombinant protein corresponding to mouse RREB1 protein.
<b>Uniprot ID</b>	<b>Q3UH06</b>
<b>Entrez</b>	<a href="https://www.ncbi.nlm.nih.gov/gene//68750">https://www.ncbi.nlm.nih.gov/gene//68750</a>
<b>Dilution Range</b>	ELISA: 1:2,000 - 1:15,000, Western Blot: 1:500 - 1:2,000



Anti-RREB1 Antibody -  
Western  
Blot