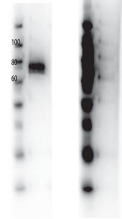


## Product Datasheet

### RON (RABBIT) Antibody GRP3944

<b>Description</b>	Anti-RON (RABBIT) Antibody
<b>Species/Host</b>	Rabbit
<b>Reactivity</b>	Human
<b>Conjugation</b>	Unconjugated
<b>Tested Applications</b>	ELISA, WB
<b>Form/Appearance</b>	0.02 M Potassium Phosphate, 0.15 M Sodium Chloride, pH 7.2
<b>Concentration</b>	1.06 mg/mL
<b>Note</b>	For research use only.
<b>Isotype</b>	IgG
<b>Clonality</b>	Polyclonal
<b>Source</b>	Anti-RON Antibody was produced in rabbits by repeated immunizations with a synthetic peptide corresponding to residues surrounding Y1360 of human RON protein.
<b>Uniprot ID</b>	<a href="#">Q04912</a>
<b>Entrez</b>	<a href="https://www.ncbi.nlm.nih.gov/gene//4486">https://www.ncbi.nlm.nih.gov/gene//4486</a>
<b>Dilution Range</b>	ELISA: 1:2,000 - 1:10,000, Western Blot: 1:500-1:2000



Western Blot - Rabbit anti-RON