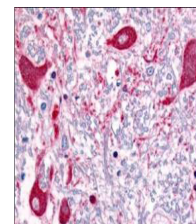


Product Datasheet

ROBO-1 (RABBIT) Antibody GRP3469

Description	Anti-ROBO-1 (RABBIT) Antibody
Species/Host	Rabbit
Reactivity	Human, Mouse
Conjugation	Unconjugated
Tested Applications	ELISA, IF, IHC-P, IP, WB
Form/Appearance	0.02 M Potassium Phosphate, 0.15 M Sodium Chloride, pH 7.2
Concentration	1.0 mg/mL
Note	For research use only.
Isotype	IgG
Clonality	Polyclonal
Source	This affinity-purified antibody was prepared from whole rabbit serum produced by repeated immunizations with a synthetic peptide corresponding to an C-Terminal region near amino acids 1625-1650 of Human ROBO-1.
Uniprot ID	Q2M1J3
Entrez	https://www.ncbi.nlm.nih.gov/gene//6091
Dilution Range	ELISA: 1:30,000 - 1:60,000,Immunochemistry: 2 µg /ml to 10 µg /ml,IF Microscopy: User Optimized,Immunoprecipitation: User Optimized,Western Blot: 1:500 - 1:3,000



Immunohistochemistry -
Anti-ROBO-1 Antibody