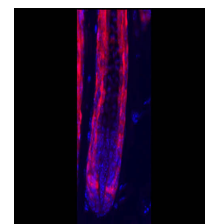


## Product Datasheet

# RFP (RABBIT) Antibody Min X Hu Ms and Rt Serum Proteins GRP3386

<b>Description</b>	Anti-RFP (RABBIT) Antibody Min X Hu Ms and Rt Serum Proteins
<b>Species/Host</b>	Rabbit
<b>Conjugation</b>	Unconjugated
<b>Tested Applications</b>	ELISA, IF, IHC-P, WB
<b>Form/Appearance</b>	0.02 M Potassium Phosphate, 0.15 M Sodium Chloride, pH 7.2
<b>Concentration</b>	0.94 mg/mL
<b>Note</b>	For research use only.
<b>Isotype</b>	IgG
<b>Clonality</b>	Polyclonal
<b>Source</b>	The immunogen is a Red Fluorescent Protein (RFP) fusion protein corresponding to the full length amino acid sequence (234aa) derived from the mushroom polyp coral <i>Discosoma</i> .
<b>Dilution Range</b>	ELISA: 1:20,000 - 1:50,000, Immunochemistry: 1:200-1:2,000, IF Microscopy: 1:200-1:2,000, Western Blot: 1:1,000 - 1:5,000



Immunofluorescence -  
Anti-RFP  
Antibody