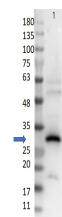


Product Datasheet

RFP (GOAT) Antibody GRP1856

Description	Antibodies to RFP (Discosoma spp.) are intended for use in immunological assays including ELISA, western blotting, immunofluorescence, and fluorescence activated cell sorting (FACS).
Species/Host	Goat
Conjugation	Unconjugated
Tested Applications	ELISA, IF, WB
Form/Appearance	0.02 M Potassium Phosphate, 0.15 M Sodium Chloride, pH 7.2
Concentration	1 mg/mL
Note	For research use only.
Isotype	IgG
Clonality	Polyclonal
Source	The immunogen is a Red Fluorescent Protein (RFP) fusion protein corresponding to the full length amino acid sequence (234aa) derived from the mushroom polyp coral Discosoma.
Dilution Range	ELISA: 1:2,000 - 1:10,000, IF Microscopy: User Optimized, Western Blot: 1:1000-1:10,000
Application Notes	Polyclonal anti-RFP is designed to detect RFP and its variants. Optimal titers for applications should be determined by the researcher. Expect a band ~27kDa in Western Blot in the appropriate cell lysate or extract.



Western Blot of Goat
Anti-RFP
Antibody