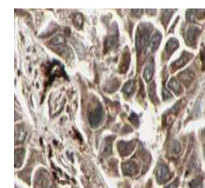


## Product Datasheet

### RFFL (RABBIT) Antibody GRP2324

<b>Description</b>	Anti-RFFL (RABBIT) Antibody
<b>Species/Host</b>	Rabbit
<b>Reactivity</b>	Human
<b>Conjugation</b>	Unconjugated
<b>Tested Applications</b>	ELISA, IHC-P, WB
<b>Form/Appearance</b>	0.02 M Potassium Phosphate, 0.15 M Sodium Chloride, pH 7.2
<b>Concentration</b>	5.0 mg/mL
<b>Note</b>	For research use only.
<b>Isotype</b>	IgG
<b>Clonality</b>	Polyclonal
<b>Purity</b>	This protein A purified antibody is directed against human RFFL protein. The product was purified from monospecific antiserum by protein A chromatography followed by exhaustive dialysis against the buffer stated above.
<b>Source</b>	This affinity purified antibody was prepared from whole rabbit serum produced by repeated immunizations with a recombinant protein corresponding to amino acids 1-363 of human RFFL protein.
<b>Uniprot ID</b>	<a href="#">Q8WZ73</a>
<b>Entrez</b>	<a href="https://www.ncbi.nlm.nih.gov/gene//117584">https://www.ncbi.nlm.nih.gov/gene//117584</a>
<b>Dilution Range</b>	ELISA: 1:4,000 - 1:20,000, Immunochemistry: 1:500 - 1:3,000, Western Blot: 1:500 - 1:3,000



Anti-RFFL Antibody -  
Immunohistochemistry