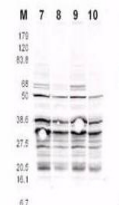


## Product Datasheet

### RFA2 pS122 (RABBIT) Antibody GRP3420

<b>Description</b>	Anti-RFA2 pS122 (RABBIT) Antibody
<b>Species/Host</b>	Rabbit
<b>Reactivity</b>	Fungi
<b>Conjugation</b>	Unconjugated
<b>Tested Applications</b>	ELISA, IP, WB
<b>Form/Appearance</b>	0.02 M Potassium Phosphate, 0.15 M Sodium Chloride, pH 7.2
<b>Concentration</b>	0.54 mg/mL
<b>Note</b>	For research use only.
<b>Isotype</b>	IgG
<b>Clonality</b>	Polyclonal
<b>Uniprot ID</b>	<b>P26754</b>
<b>Entrez</b>	<a href="https://www.ncbi.nlm.nih.gov/gene//855404">https://www.ncbi.nlm.nih.gov/gene//855404</a>
<b>Dilution Range</b>	ELISA: 1:8,000 - 1:20,000, Immunoprecipitation: 1:100, Western Blot: 1:500 - 1:1000
<b>Application Notes</b>	This affinity-purified antibody was tested for use in western blotting against RFA2 containing cell lysates and by ELISA against the immunizing peptide. Reactivity in other immunoassays is unknown.



Anti-RFA2 pS122 Antibody  
Western Blot