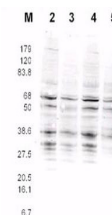


Product Datasheet

RFA2 pan reactive (RABBIT) Antibody GRP3421

Description	Anti-RFA2 pan reactive (RABBIT) Antibody
Species/Host	Rabbit
Reactivity	Fungi
Conjugation	Unconjugated
Tested Applications	ELISA, IP, WB
Form/Appearance	0.02 M Potassium Phosphate, 0.15 M Sodium Chloride, pH 7.2
Concentration	0.12 mg/mL
Note	For research use only.
Isotype	IgG
Clonality	Polyclonal
Uniprot ID	P26754
Entrez	https://www.ncbi.nlm.nih.gov/gene//855404
Dilution Range	ELISA: 1:1000 - 1:3000, Immunoprecipitation: 1:100, Western Blot: 1:100 - 1:500

Application Notes This affinity-purified antibody was tested for use in western blotting against RFA2 containing cell lysates and by ELISA against the immunizing peptide. Reactivity in other immunoassays is unknown.



Anti-RFA2 Antibody -
Western
Blot