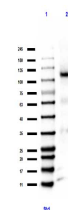


## Product Datasheet

### Retinoblastoma [Monomethyl Lys860] (RABBIT) Antibody GRP3793

<b>Description</b>	Anti-Retinoblastoma [Monomethyl Lys860] (RABBIT) Antibody
<b>Species/Host</b>	Rabbit
<b>Reactivity</b>	Human
<b>Conjugation</b>	Unconjugated
<b>Tested Applications</b>	ELISA, WB
<b>Form/Appearance</b>	0.02 M Potassium Phosphate, 0.15 M Sodium Chloride, pH 7.2
<b>Concentration</b>	0.99 mg/ml
<b>Note</b>	For research use only.
<b>Isotype</b>	IgG
<b>Clonality</b>	Polyclonal
<b>Source</b>	Anti-Retinoblastoma [Monomethyl Lys860] Antibody was prepared from whole rabbit serum produced by repeated immunizations with a methylated and acetylated synthetic peptide surrounding lysine 860 of human RB1 conjugated to Keyhole Limpet Hemocyanin (KLH).
<b>Uniprot ID</b>	<b>P06400</b>
<b>Entrez</b>	<a href="https://www.ncbi.nlm.nih.gov/gene//5925">https://www.ncbi.nlm.nih.gov/gene//5925</a>
<b>Dilution Range</b>	ELISA: 1:10,000-1:50,000, Western Blot: 1.0 ug/ml



Western Blot of Rabbit anti-Retinoblastoma [Monomethyl Lys860] antibody