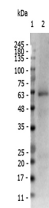


Product Datasheet

receptor ROR gamma pS203 (RABBIT) Antibody GRP3756

Description	Anti-receptor ROR gamma pS203 (RABBIT) Antibody
Species/Host	Rabbit
Reactivity	Mouse
Conjugation	Unconjugated
Tested Applications	ELISA, WB
Form/Appearance	0.02 M Potassium Phosphate, 0.15 M Sodium Chloride, pH 7.2
Concentration	1.05 mg/mL
Note	For research use only.
Isotype	IgG
Clonality	Polyclonal
Source	Affinity purified Anti-receptor ROR gamma pS203 antibody was prepared from whole rabbit serum produced by repeated immunizations with an internal synthetic peptide phosphorylated at the serine 203 position of mouse receptor ROR gamma protein.
Dilution Range	ELISA: 5 ug/mL, Western Blot: 1 ug/mL



Western blot of
Anti-receptor
ROR gamma pS203
Antibody